



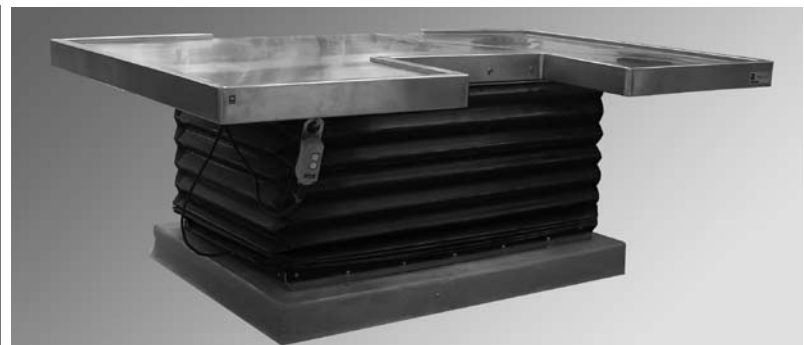
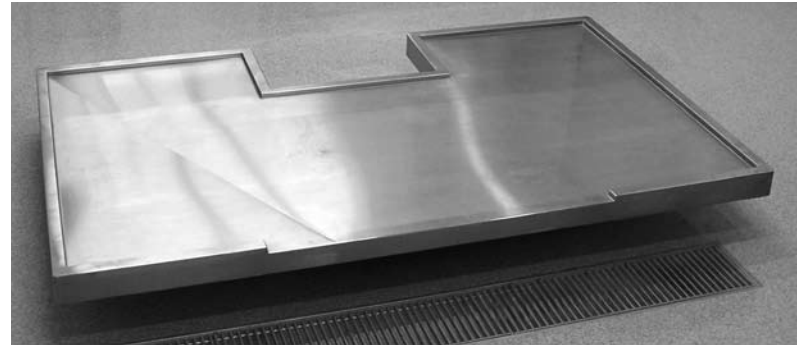
SECTION 9 ~ NECROPSY DISSECTION TABLES

SECTION INDEX

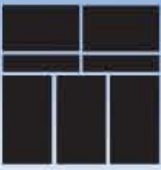
NECROPSY TABLES	PAGE
Downdraft Necropsy Station.....	2-3
Small Necropsy Stations.....	4-9
Medium Necropsy Station	10-11
Standard Necropsy Table	12-13
Ventilated Hood	
Dissection Table	14-15
"T" Shaped Large Station.....	16-17
HD Large Animal Station	18-20



Small Animal Necropsy Tables



Large Animal Necropsy Tables

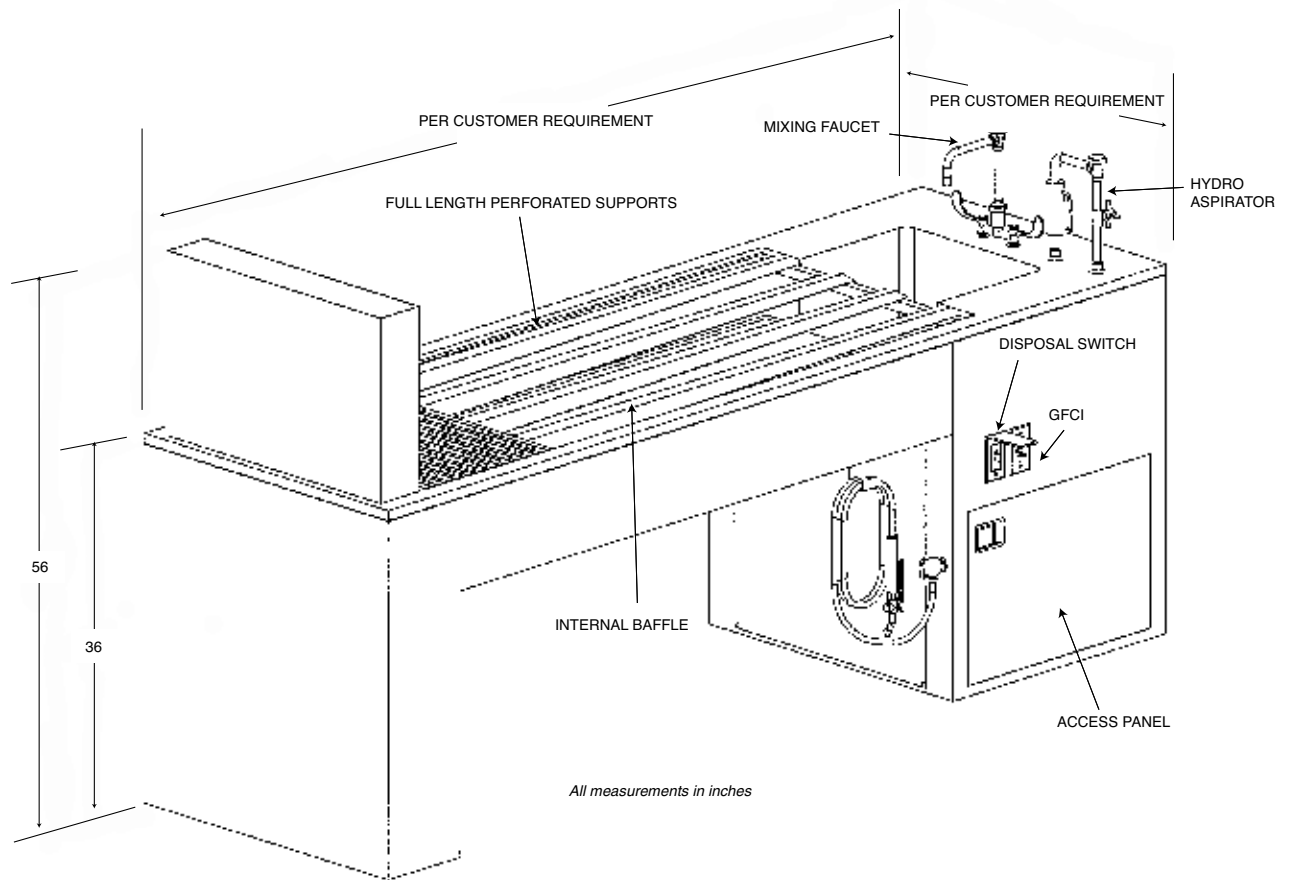


MODEL 1036-210 DOWNDRAFT NECROPSY WORKSTATION



MODEL 1036-210
Standard Design Features

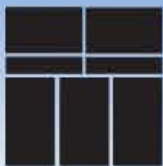
- All stainless steel construction
- Heliarc-welded seams and joints, ground and polished to match adjoining surfaces
- Radii on all inside and outside corners for easy cleaning
- Hydro-Aspirator with cold water control valve, nozzle, 10 foot of flexible hose and backflow protection
- Mixing Faucet with gooseneck spout and wrist blade handles
- Heavy-duty 1/2 hp Commercial Disposal with switch
- Large single compartment sink basin, 14 inches x 12 inches x 8 inches deep
- Full Length, Perforated Supports
- Rapid and positive drainage
- Access panel door
- Waterproof GFCI Electrical Outlet
- Plumbing and Electrical lines factory installed and required only single point connection at the project location



MODEL 1036-210

Optional Accessories:

- Heavy Duty Commercial Disposal (3/4, 1 or 2 hp)
- Postmortem Scale with Scale Pole
- Surgical Light Fixture
- Table End Rinse with cold water control valve and backflow protection
- Gas / Air / Vacuum / Oxygen Cocks
- Emergency Eye Wash
- Centimeter or Inch Markings



MODEL 1036-215 SMALL ANIMAL NECROPSY TABLE



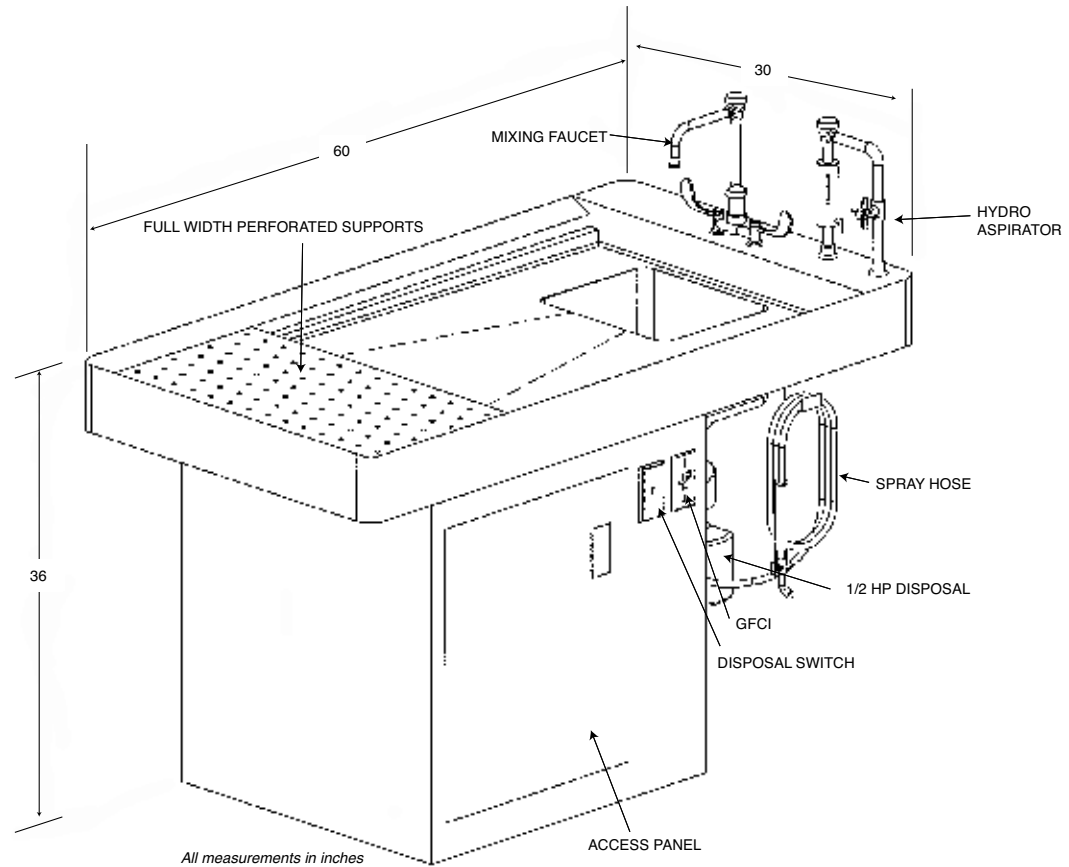
MODEL 1036-215

Standard Design Features:

- Standard Size: 30 inches wide x 60 inches long x 36 inches high
- All stainless steel construction
- Heliarc-welded seams and joints, ground and polished to match adjoining surfaces
- Radii on all inside and outside corners for easy cleaning
- Hydro-Aspirator with cold water control valve, nozzle, 10 foot of flexible hose and backflow protection
- Mixing Faucet with gooseneck spout and wrist blade handles
- Heavy-duty 1/2 hp Commercial Disposal with switch
- Large single compartment sink basin, 14 inches x 12 inches x 8 inches deep
- Full Length, Perforated Supports
- Rapid and positive drainage
- Access panel door
- Waterproof GFCI Electrical Outlet
- Plumbing and Electrical lines factory installed and required only single point connection at the project location



MODEL 1036-215 LAYOUT DRAWING & OPTIONAL FEATURES



MODEL 1036-215

Optional Accessories:

- Heavy Duty Commercial Disposal (3/4, 1 or 2 hp)
- Postmortem Scale with Scale Pole
- Surgical Light Fixture
- Table End Rinse with cold water control valve and backflow protection
- Gas / Air / Vacuum Valves
- Emergency Eye Wash
- Centimeter or Inch Markings



MODEL 1036-273 4 STATION BACKDRAFT/DOWNDRAFT

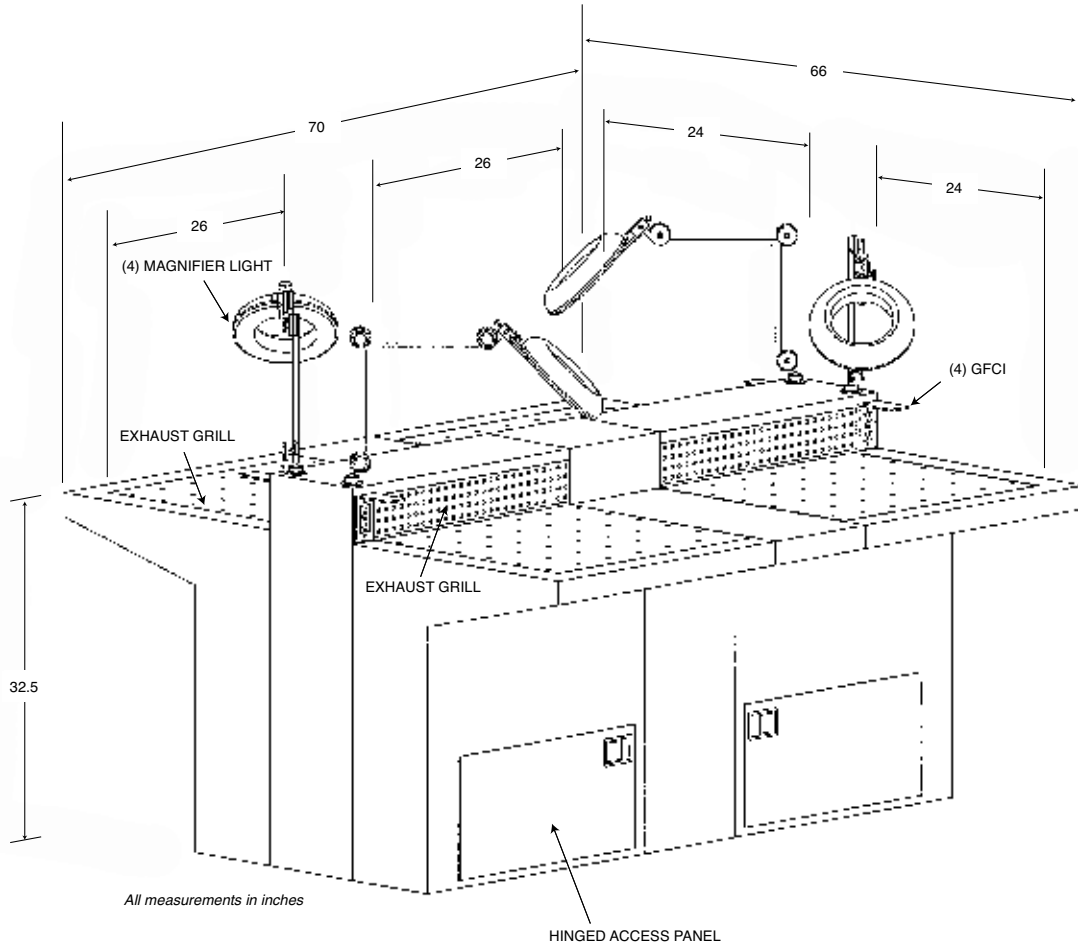


MODEL 1036-273
Standard Design Features:

- Standard Size: 70 inches wide x 66 inches long x 32.5 inches high
- All stainless steel construction
- Heliarc-welded seams and joints, ground and polished to match adjoining surfaces
- Magnifier Lights (4)
- Hinged Access Doors (4)
- (4) 18ga. Stainless Steel Perforated work surface panels recessed 1/4 inch to prevent fluids escaping
- Waterproof GFCI Electrical Outlet (4)



MODEL 1036-273 LAYOUT DRAWING & OPTIONAL FEATURES



MODEL 1036-273
Optional Accessories:

- Gas / Air Vacuum / Oxygen Cocks
- Emergency Eye Wash
- Spray Hose Assembly



MODEL 1036-225 SMALL DOWNDRAFT DISSECTION TABLE

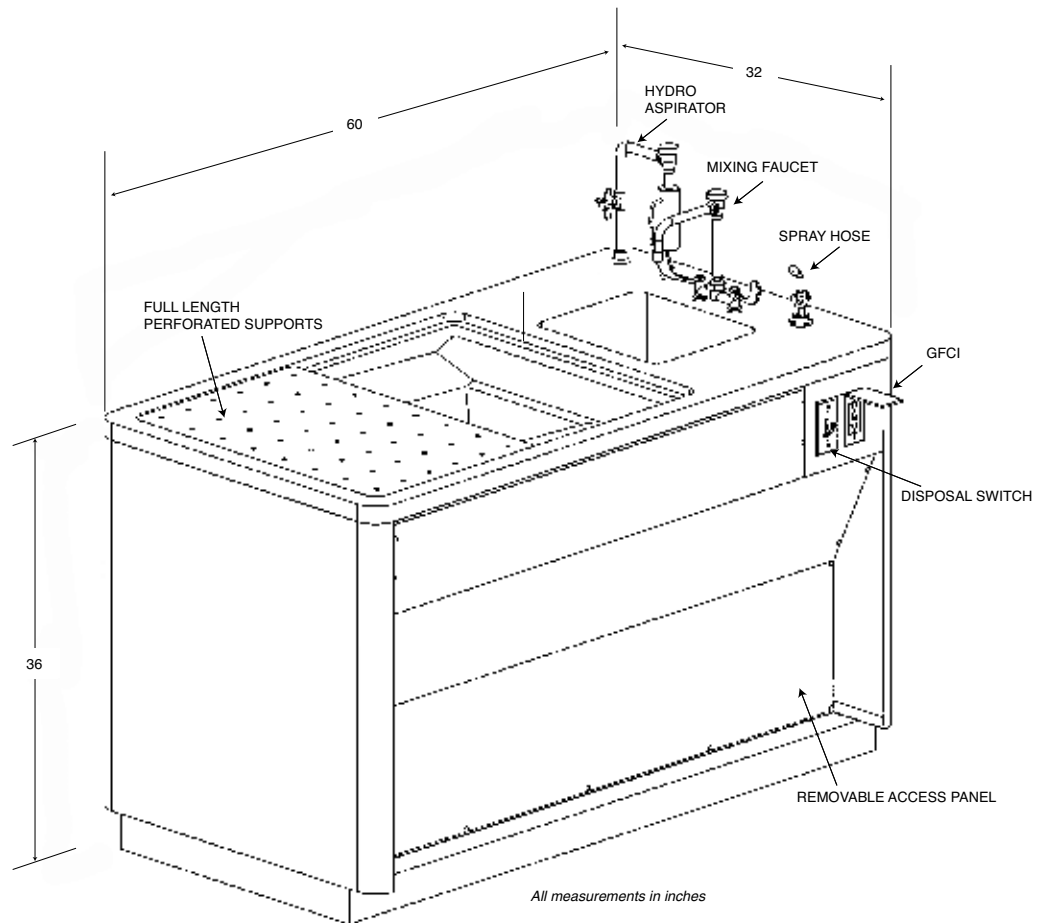


MODEL 1036-225
Standard Design Features:

- Standard Size: 32 inches wide x 60 inches long x 36 inches high
- All stainless steel construction
- Heliarc-welded seams and joints, ground and polished to match adjoining surfaces
- Radii on all inside and outside corners for easy cleaning
- Hydro-Aspirator with cold water control valve, nozzle, 10 foot of flexible hose and vacuum breaker
- Mixing Faucet with gooseneck spout and wrist blade handles
- Heavy-duty 1/2 hp Commercial Disposal with switch
- Large single compartment sink basin, 14 inches x 12 inches x 8 inches deep
- (2) Perforated Dissection Grids
- Rapid and positive drainage
- Removable Access panel
- Waterproof GFCI Electrical Outlet
- Plumbing and Electrical lines factory installed and required only single point connection at the project location



MODEL 1036-225 LAYOUT DRAWING & OPTIONAL FEATURES



MODEL 1036-225

Optional Accessories:

- Heavy Duty Commercial Disposal (3/4, 1 or 2 hp)
- Table End Rinse with cold water control valve and vacuum breaker
- Gas / Air / Vacuum Valves
- Emergency Eye Wash
- Centimeter or inch markings



MODEL 1036-230 MEDIUM SIZE NECROPSY STATION



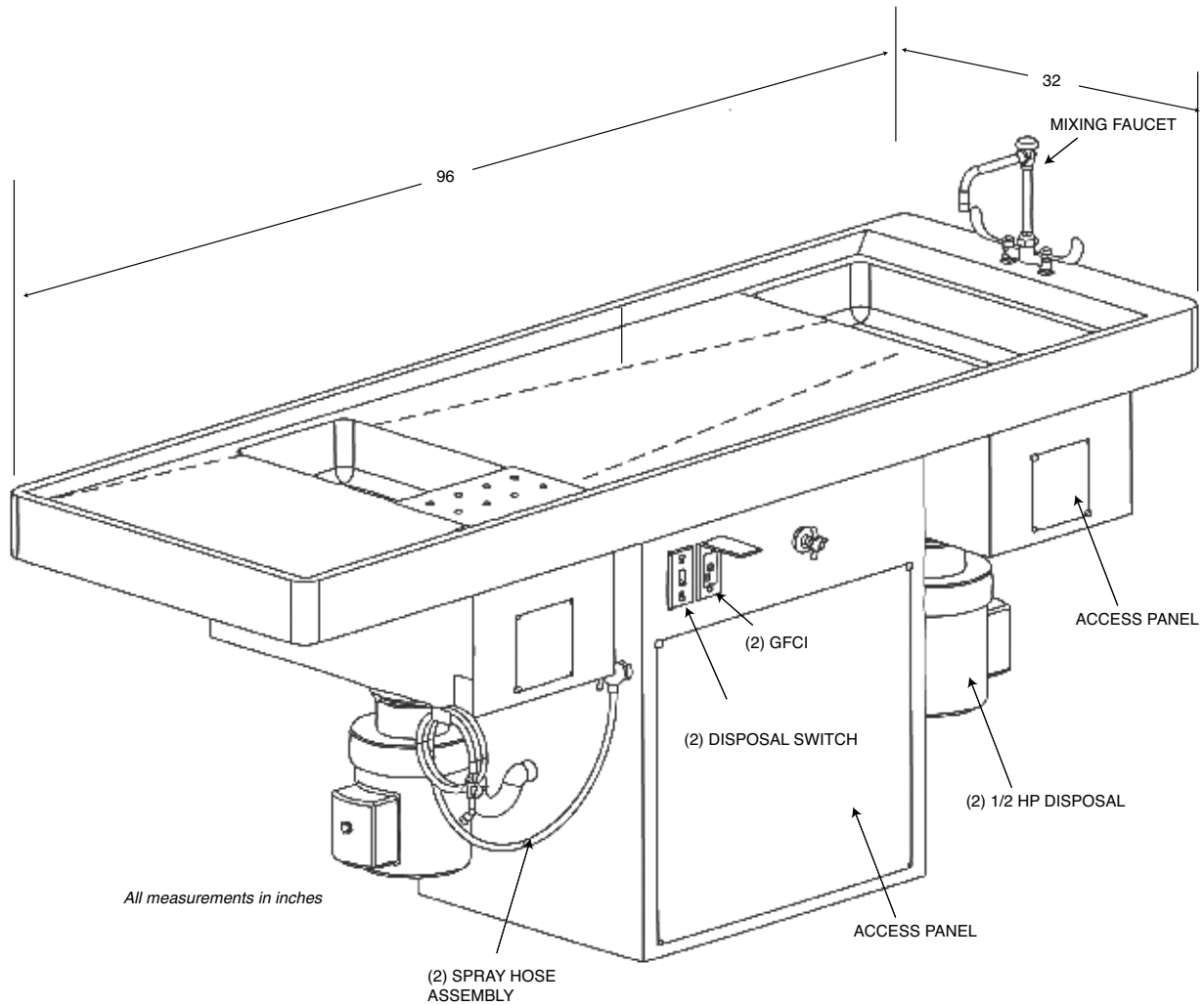
MODEL 1036-230

Standard Design Features:

- Standard Size: 32 inches wide x 96 inches long x 40 inches high
- All stainless steel construction
- Heliarc-welded seams and joints, ground and polished to match adjoining surfaces
- Radii on all inside and outside corners for easy cleaning
- Downdraft ventilation provided at each sink location
- (2) Spray Hose Assemblies with cold water control valves, nozzles, 10 feet of flexible hose and backflow prevention
- Mixing Faucet with gooseneck spout and wrist blade handles
- (2) Heavy-duty 1/2 hp Commercial Disposal with switch
- (2) Large single compartment sink basin, 24 inches x 12 inches x 8 inches deep
- (4) Tie Rings for hold-down points
- Rapid and positive drainage
- Removable Access panel
- (2) Waterproof GFCI Electrical Outlet
- Plumbing and Electrical lines factory installed and required only single point connection at the project location



MODEL 1036-230 LAYOUT DRAWING & OPTIONAL FEATURES



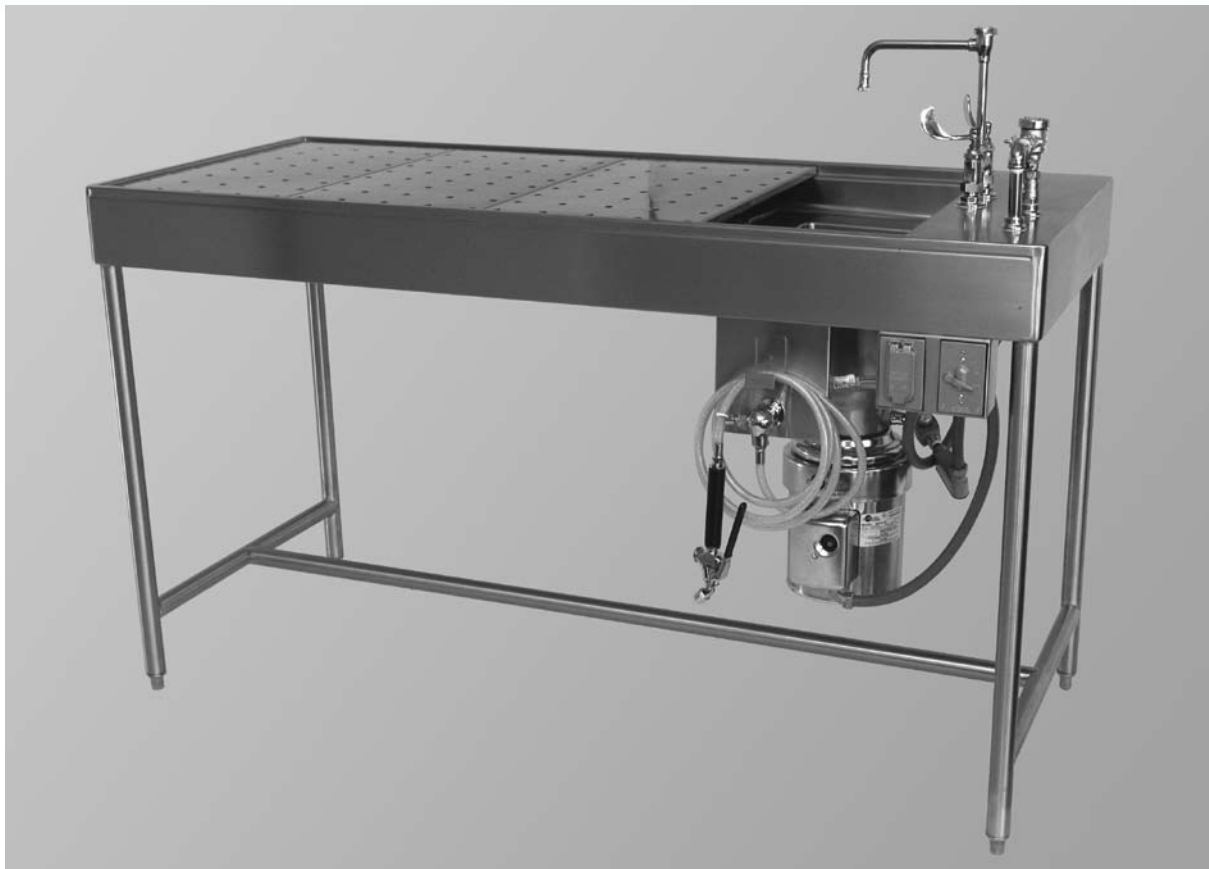
MODEL 1036-230

Optional Accessories:

- Heavy Duty Commercial Disposal (3/4, 1 or 2 hp)
- Postmortem Scale with Scale Pole
- Gas / Air / Vacuum Valves
- Emergency Eye Wash
- Centimeter or Inch Markings



MODEL 1036-235 STANDARD NECROPSY TABLE

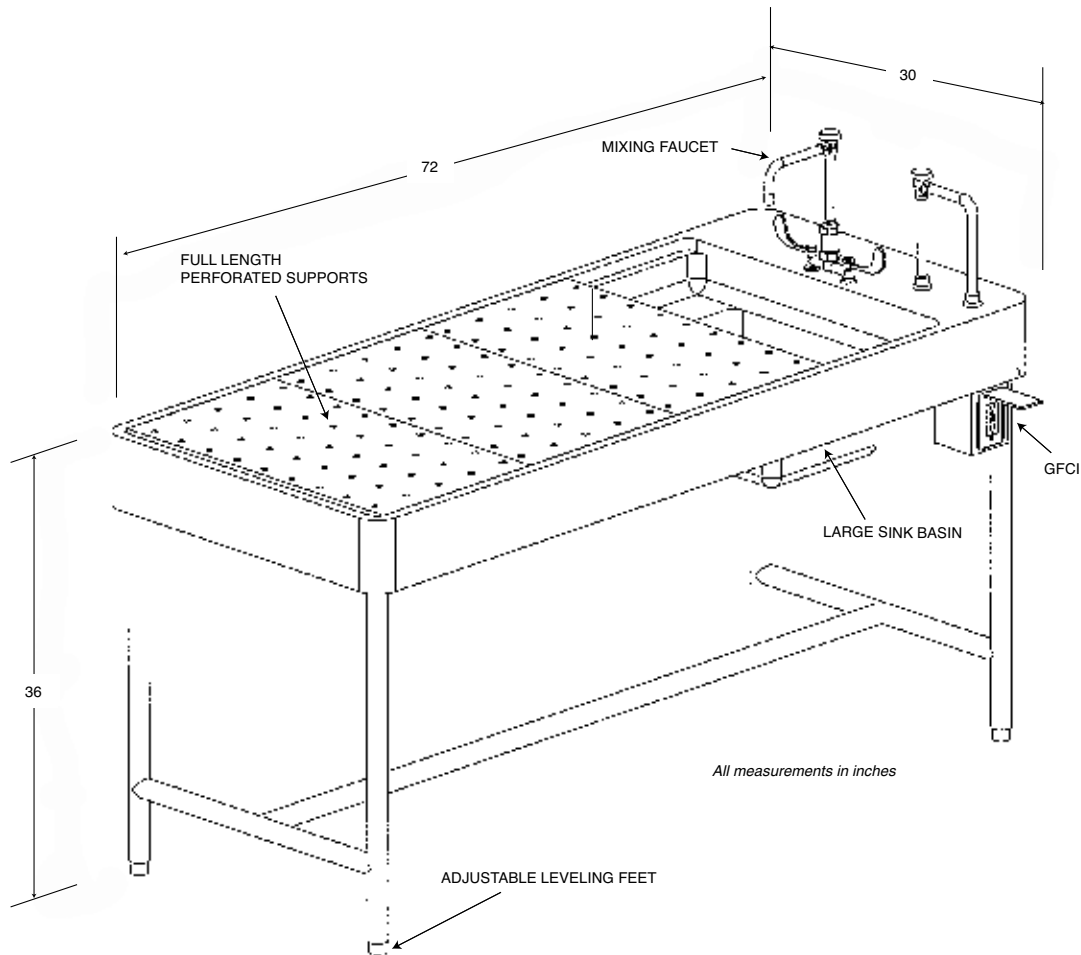


MODEL 1036-235
Standard Design Features:

- Standard Size: 30 inches wide x 72 inches long x 36 inches high
- All stainless steel construction
- Heliarc-welded seams and joints, ground and polished to match adjoining surfaces
- Radii on all inside and outside corners for easy cleaning
- Mixing Faucet with gooseneck spout and wrist blade handles
- Large single compartment sink basin, 14 inches x 12 inches x 8 inches deep
- Full Length Perforated Supports
- Rapid and positive drainage
- Waterproof GFCI Electrical Outlet
- Plumbing and Electrical lines factory installed and required only single point connection at the project location



MODEL 1036-235 LAYOUT DRAWING & OPTIONAL FEATURES



MODEL 1036-235

Optional Accessories:

- Heavy Duty Commercial Disposal (1/2, 3/4, 1 or 2 hp)
- Postmortem Scale with Scale Pole
- Table End Rinse with cold water control valve and vacuum breaker
- Gas / Air / Vacuum Cocks
- Emergency Eye Wash
- Centimeter or Inch Markings
- Hydro-Aspirator Assembly
- Spray Hose Assembly



MODEL 1036-240 VENTILATED HOOD DISSECTION TABLE

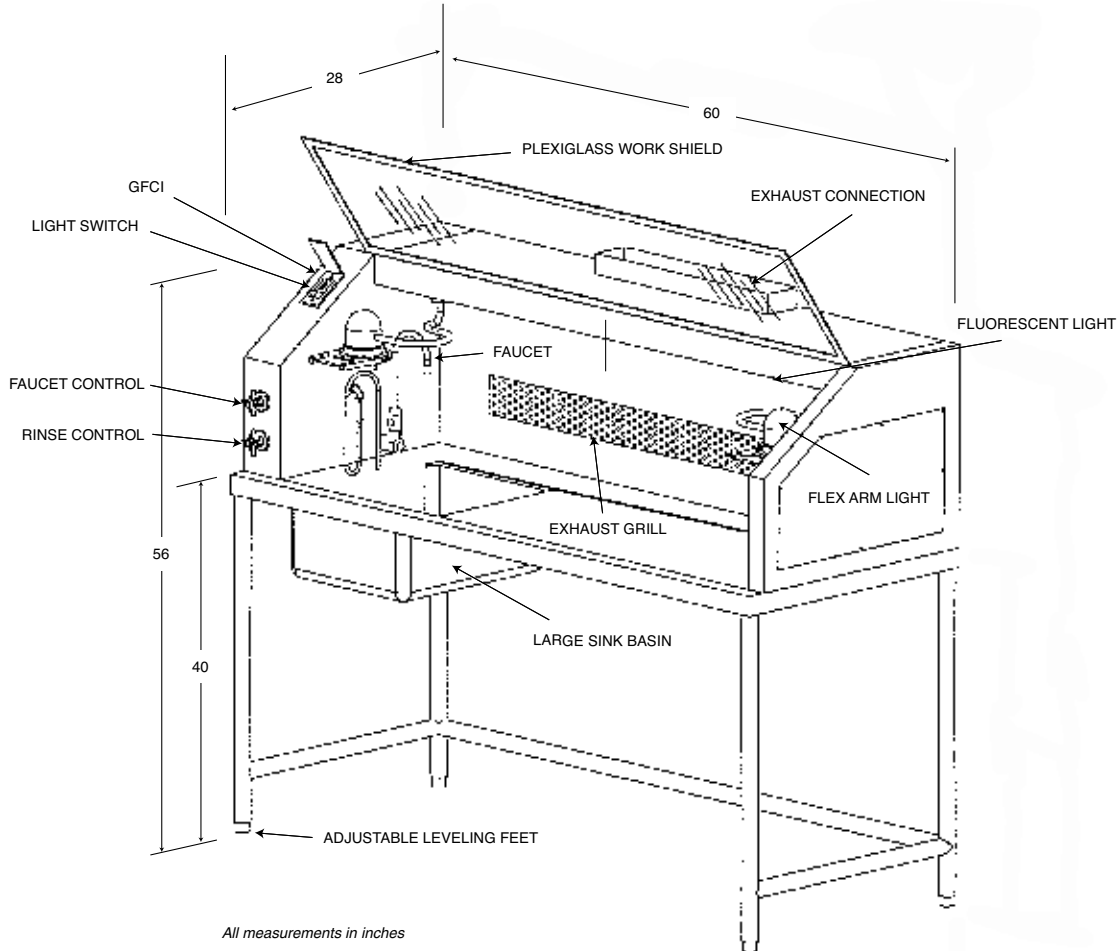


MODEL 1036-240
Standard Design Features:

- Standard Size: 28 inches wide x 60 inches long x 40 inches high, working height
- All stainless steel construction
- Heliarc-welded seams and joints, ground and polished to match adjoining surfaces
- Radii on all inside and outside corners for easy cleaning
- Faucet with cold water control
- Hose Rinse Assembly with cold water control
- Large single compartment sink basin, 14 inches x 12 inches x 8 inches deep
- Rapid and positive drainage
- Waterproof GFCI Electrical Outlet
- Plumbing and Electrical lines factory installed and required only single point connection at the project location



MODEL 1036-240 DRAWING & OPTIONAL FEATURES



MODEL 1036-240

Optional Accessories:

- Heavy Duty Commercial Disposal (1/2, 3/4, 1 or 2 hp)
- Table End Rinse with cold water control valve and vacuum breaker
- Gas / Air / Vacuum Valves
- Emergency Eye Wash
- Centimeter or Inch Markings
- Flex Arm Light with Magnifier



MODEL 1036-245 "T" SHAPED LARGE ANIMAL NECROPSY TABLE



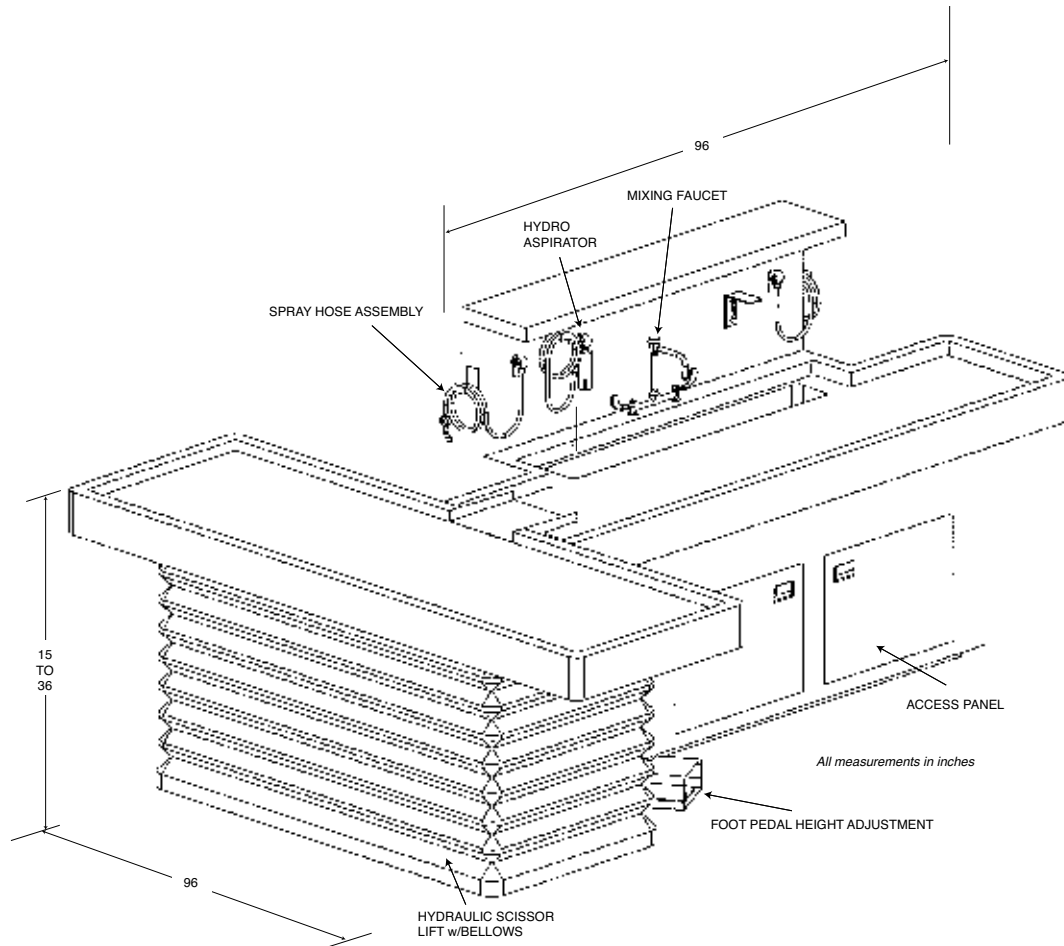
MODEL 1036-245

Standard Design Features:

- All Stainless Steel construction on sink area and elevating tabletop
- Heliarc-welded seams and joints, ground and polished to match adjoining surfaces
- Radii on all inside and outside corners for easy cleaning
- Hydro-Aspirator with cold water control valve, nozzle, 10 foot of flexible hose and backflow protection
- Mixing Faucet with gooseneck spout and wrist blade handles
- Heavy-duty 1/2 hp Commercial Disposal with switch
- Rapid and positive drainage
- Access panel doors
- Waterproof GFCI Electrical Outlet
- 5,000 lbs Hydraulic lifting device with foot pedal operation
- Accordion Bellows to conceal hydraulic lifting mechanism
- (2) Spray Hose Assemblies with control handle, 10 foot hose and cold water control
- Plumbing and Electrical lines factory installed and required only single point connection at the project location



MODEL 1036-245 LAYOUT DRAWING & OPTIONAL FEATURES

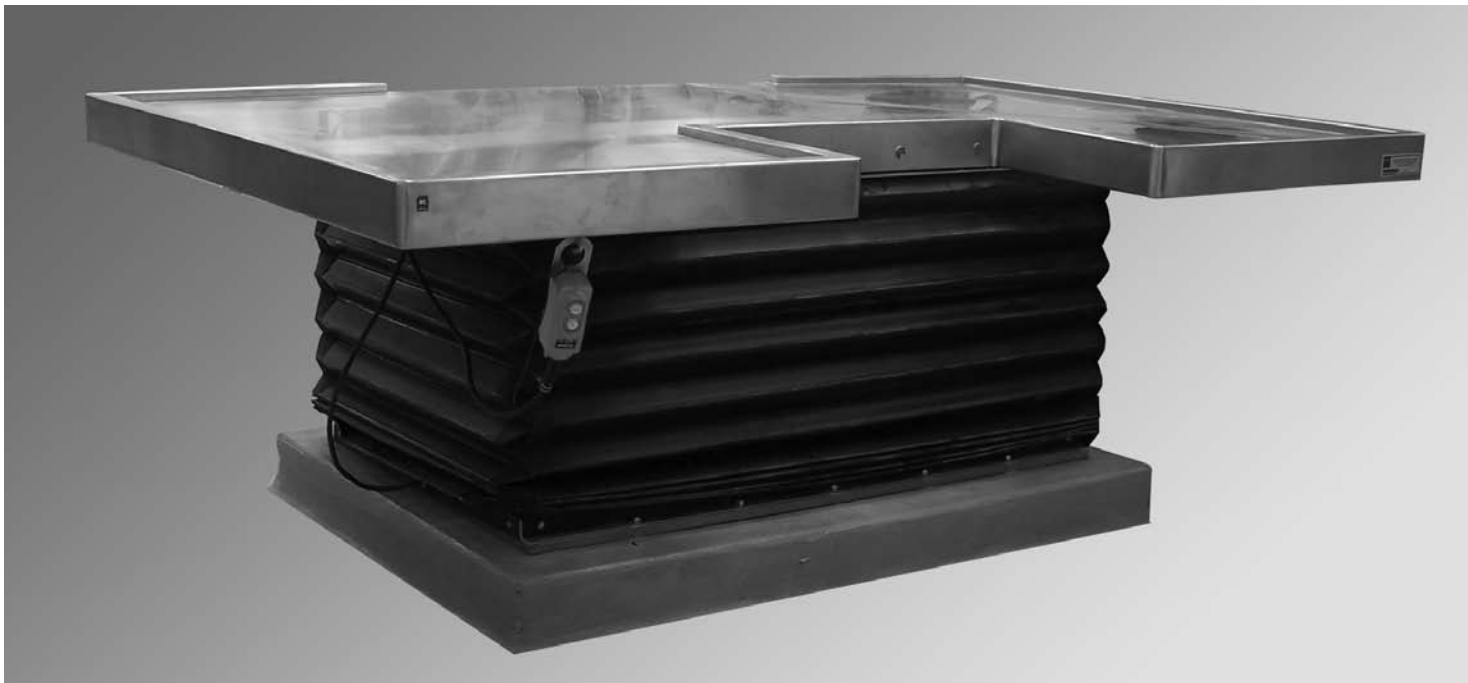


MOI
Optic

- Heavy duty Commercial Disposal (3/4, 1 or 2 hp)
- Postmortem Scale with Scale Pole
- Surgical light Fixture
- Table End Rinse with cold water control valve and vacuum breaker
- Gas / Air / Vacuum Valves
- Emergency Eye Wash
- Centimeter or inch markings



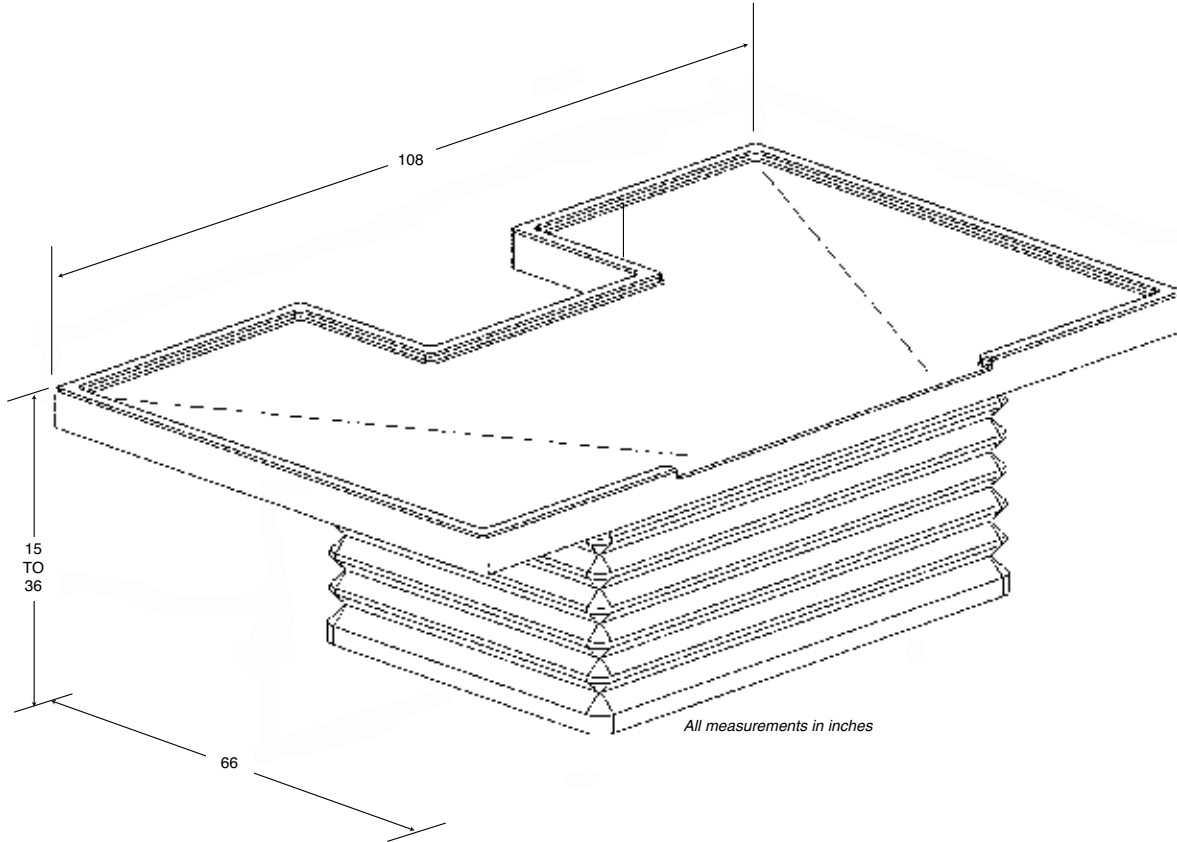
MODEL 1036-250 HD LARGE ANIMAL NECROPSY TABLE



MODEL 1036-250

Standard Design Features:

- U-shaped table is designed for use as a large animal necropsy table. It features all heavy gauge stainless steel construction. (11 gauge Type 304 with a no. 4B Finish)
- The unit is designed to handle a centralized load of 5,000 pounds and an offset load of 2,500 pounds.
- The inner frame support is fabricated from heavy gauge steel tubing
- The unit elevates from 15" to 36" above the finished floor
- The table top and inner frame support are attached to an electrically powered hydraulic scissor lift. The lift is floor mounted and has a capacity of 6,000 pounds. (115v / 60 Hz / 1 Phase - 1.5 hp motor)
- A 52" drain slot is centrally located on the back edge of the table. The back edge is the side opposite the "U" shaped indent
- Accordion style bellows surround the scissor lift allowing for complete washdown of the unit
- Easy to use up/down elevation control
- In ground lifting devices are available. Please contact us for details and special installation requirements
- Lighter capacity mobile units also available





MODEL 1036-250M HD LARGE ANIMAL NECROPSY TABLE



MODEL 1036-250M

Standard Design Features:

- U-shaped table is designed for use as a large animal necropsy table. It features all heavy gauge stainless steel construction. (11 gauge Type 304 with a no. 4B Finish)
- The unit is designed to handle a centralized load of 5,000 pounds and an offset load of 2,500 pounds.
- The inner frame support is fabricated from heavy gauge steel tubing
- The unit elevates from 15" to 36" above the finished floor
- The table top and inner frame support are attached to an electrically powered hydraulic scissor lift. The lift is floor mounted and has a capacity of 6,000 pounds. (115v / 60 Hz / 1 Phase - 1.5 hp motor)
- A 52" drain slot is centrally located on the back edge of the table. The back edge is the side opposite the "U" shaped indent
- Accordion style bellows surround the scissor lift allowing for complete washdown of the unit
- Easy to use up/down elevation control
- In ground lifting devices are available. Please contact us for details and special installation requirements
- Lighter capacity mobile units also available